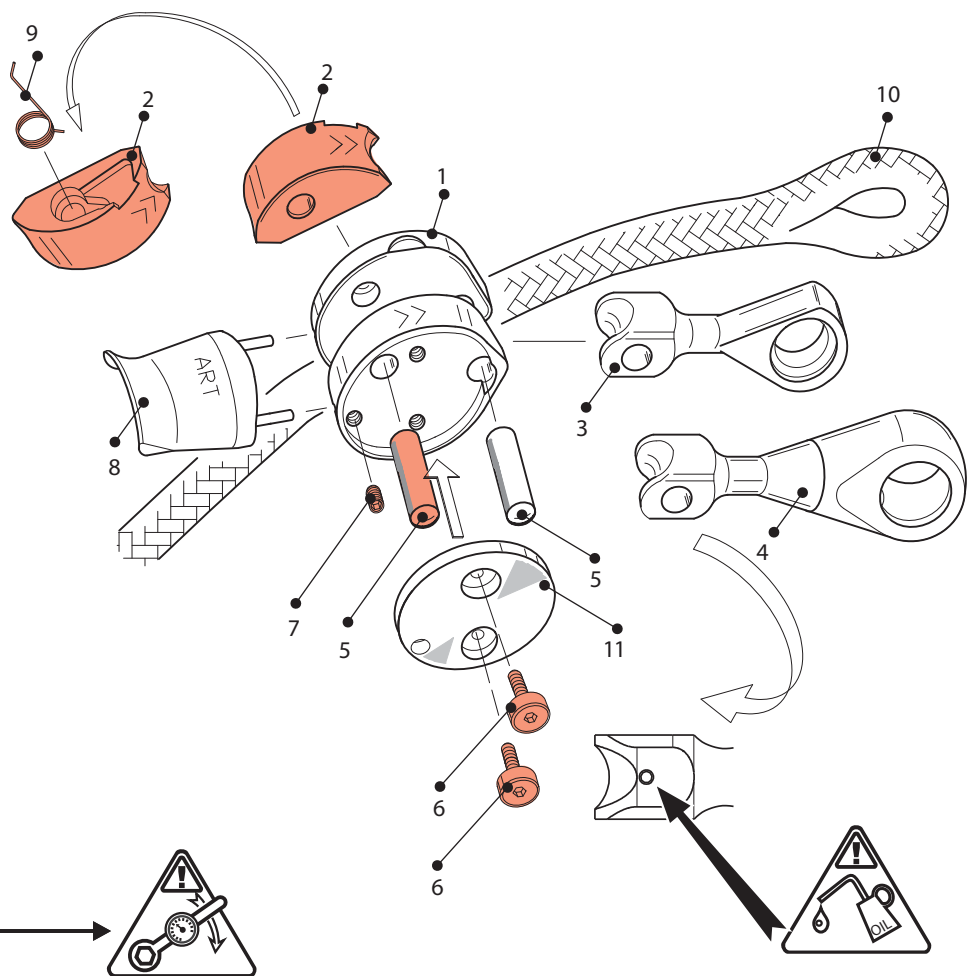


Positioner:



1 Body of equipment

2 Friction clutch*

3 Carabiner take up

4 Swivel carabiner take up

5 Bearing bolts

6 Safety screw 3-4 Nm / 26,5-35,4 IN-Lbs

7 Safety screw for release lever 3-4 Nm / 26,5-35,4 IN-Lbs

8 Release lever

9 Spring

10 Rope

11 Cover

* Friction clutch "S" for sheathed steel rope,
with outer dimension: 12-13 mm