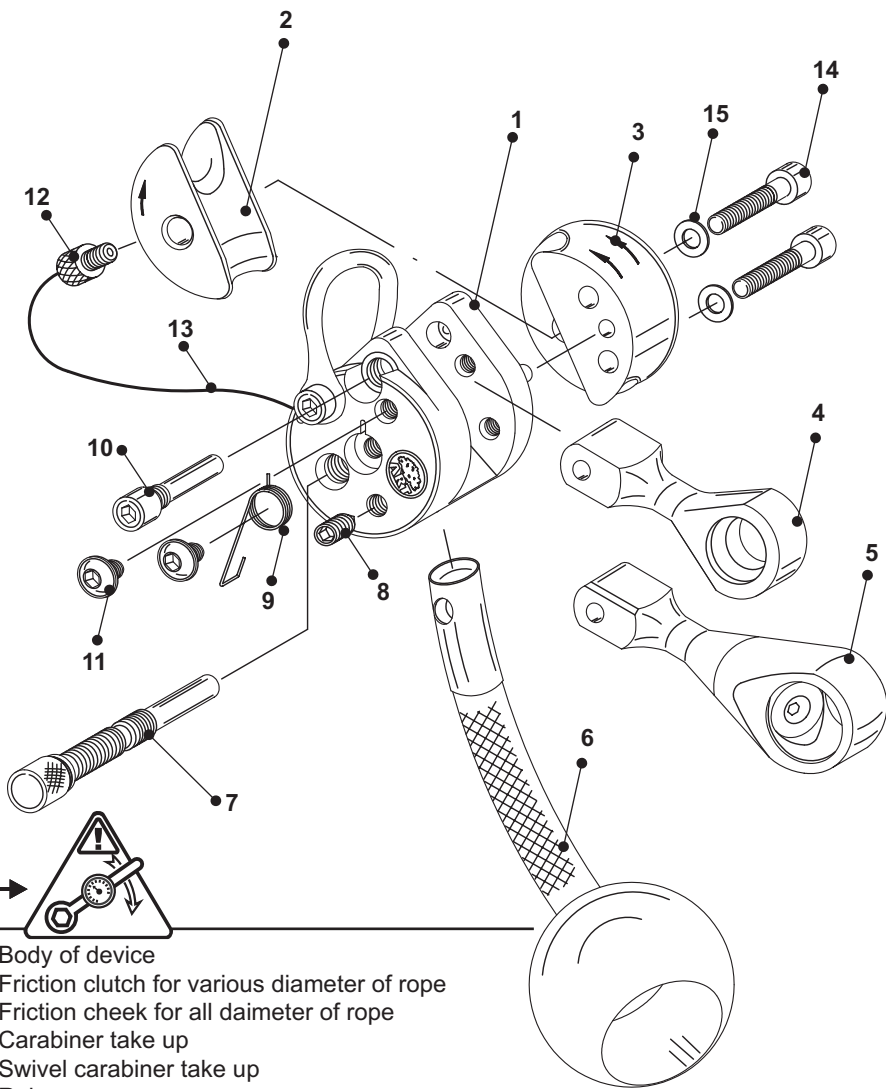


Lockjack Sport:



- | | | |
|----|--|---------------------------|
| 1 | Body of device | |
| 2 | Friction clutch for various diameter of rope | |
| 3 | Friction cheek for all diameter of rope | |
| 4 | Carabiner take up | |
| 5 | Swivel carabiner take up | |
| 6 | Release rope | |
| 7 | Bearing screw for friction clutch | |
| 8 | Safety screw for release rope | |
| 9 | Spring | |
| 10 | Bearing screw for carabiner take up | 6-7,5 Nm / 53-66,4 IN-Lbs |
| 11 | Safety screw | 6-7,5 Nm / 53-66,4 IN-Lbs |
| 12 | Banjo screw | |
| 13 | String | |
| 14 | Screw | 6-7,5 Nm / 53-66,4 IN-Lbs |
| 15 | Washer | |