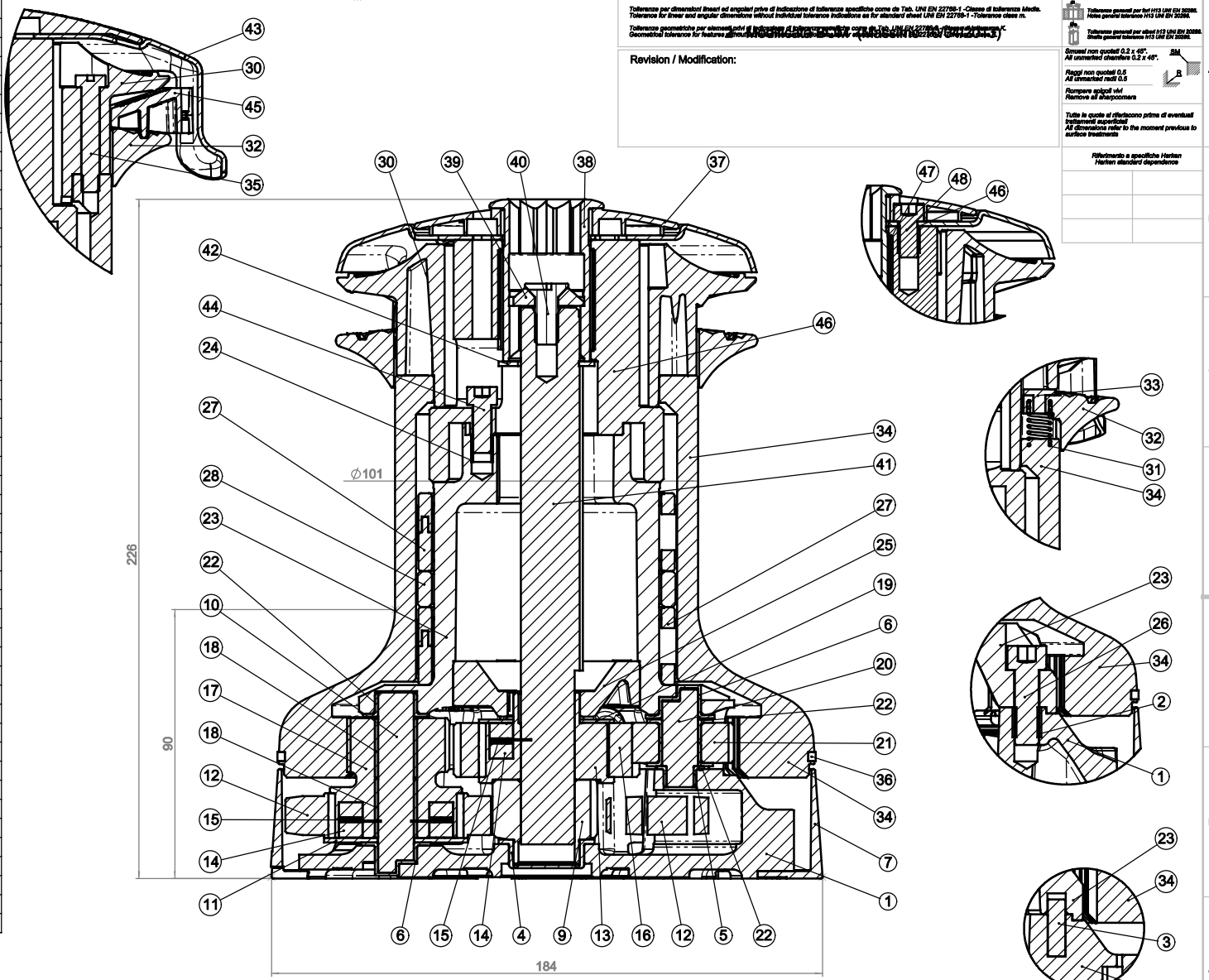


Pos.	Q.ty	Code	Description
1	1	S 41321 00 53	Base W46
2	5	M0627802	Heli-coil M8x10
3	1	S 41335 00 80	Roller Ø6x19
4	1	S 41523 00 A7	Bushing Ø22xØ25x9.5
5	1	S414890080	Bushing Ø9xØ11x7
6	2	S 41333 00 85	Bushing Ø12xØ14x11
7	1	S 41323 00 A5	Skirt W46
8	1	S 41878 00 63	Winch Product Sticker
9	1	S 41302 00 04	Gear Z12
10	1	S 41330 00 04	Pin ø12x60
11	1	S278170002	Washer 12.5x48x1.5
12	1	S 41326 00 04	Gear Z27
13	1	S 41426 00 04	Pawl Carrier Ø8xN2
14	6	S 00008 00 03	Pawl Ø8
15	6	S 00038 00 01	Pawl Spring dia 8
16	1	S 41283 00 41	Gear Z23
17	1	S 41325 00 41	Pinion Z13
18	2	M6017694	IGUS Bushing PSM-1214-20
19	1	S 41312 00 02	Washer Ø22.5xØ45x1
20	1	S 41307 00 04	Pin ø9-ø12x32.5
21	1	S 41334 00 04	Gear Z12
22	3	S 41490 00 80	Bushing Ø12xØ14x8
23	1	S 41322 00 53	Housing Winch 46
24	6	M0649802	Heli-coil M6x9
25	1	S 41332 00 B3	Bushing for support
26	5	M0606303	Screw M8x25 UNI 5931
27	2	A 741337 00	Bearing Ø75xØ87x26
28	1	S 41339 00 80	Spacer
29	1	S 41876 00 63	Winch Serial Number Sticker
30	1	S 41274 00 A9	Upper Jaw W46
31	4	S385970001	SPRING
32	1	S 65954 00 A9	Lower Jaw 46 Arborist
33	4	S 65955 00 80	Plug
34	1	S 65961 00 43	Drum W46 ST GNP
35	4	M0601803	Vite UNI EN ISO 1207:1996 - M6x35 - A4
36	1	S281690097	Red line
37	1	S 67657 00 A5	Cover 2 speed W46 GNP
38	1	S 41364 00 19	Socket Handle W20/80
39	1	S 41513 00 85	Washer Ø7.7xØ25x5.8
40	1	M 06143 03	Screw M8x20 UNI 6109
41	1	S 65956 00 02	Central shaft W46 Arborist
42	1	S 41388 00 02	Washer Ø17.2xØ32x1.5
43	1	S 41338 00 19	Stripper Arm W46
44	3	M0635103	Socket head screw M6x16 UNI 5931
45	1	S 65959 00 80	Peeler W46 Arborist
46	1	S 67655 00 52	Support GNP
47	1	S 02786 00 98	Bushing winch 6
48	3	M 06037 03	Screw M6x12 UNI 5931



Tolleranze per dimensioni lineari ed angolari prima di indicazione di tolleranze specifiche come da Tab. UNI EN 22769-1 - Classe di tolleranza Media.
 Tolerance for linear and angular dimensions without individual tolerance indications as for standard sheet UNI EN 22769-1 - Tolerance class m.
 Tolleranze geometriche per elevazioni, intagli ed intagliati di elevazione come da Tab. UNI EN 22769-2 (Classe di tolleranza C)
 Geometrical tolerance for features, chamfers and chamfered surfaces as per standard sheet UNI EN 22769-2 (Tolerance class C)

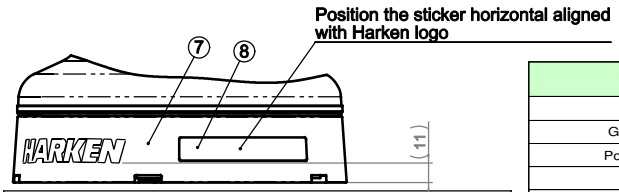
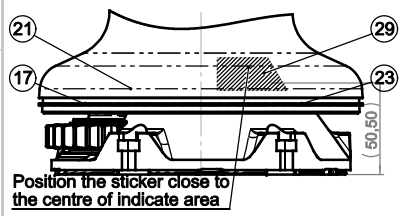
Revision / Modification:

Tolleranze generali per filetti ISO UNI EN 22801.
 Tolleranze generali per filetti ISO UNI EN 22801.
 Tolleranze generali per filetti ISO UNI EN 22801.
 Tolleranze generali per filetti ISO UNI EN 22801.

Spessore non superiore 0.5 ± 0.05
 All unmarked radii 0.5
 Rappresenta spigoli vivi
 Features all sharp corners

Tutte le quote di riferimento prima di eventuali trattamenti superficiali.
 All dimensions refer to the moment previous to surface treatments

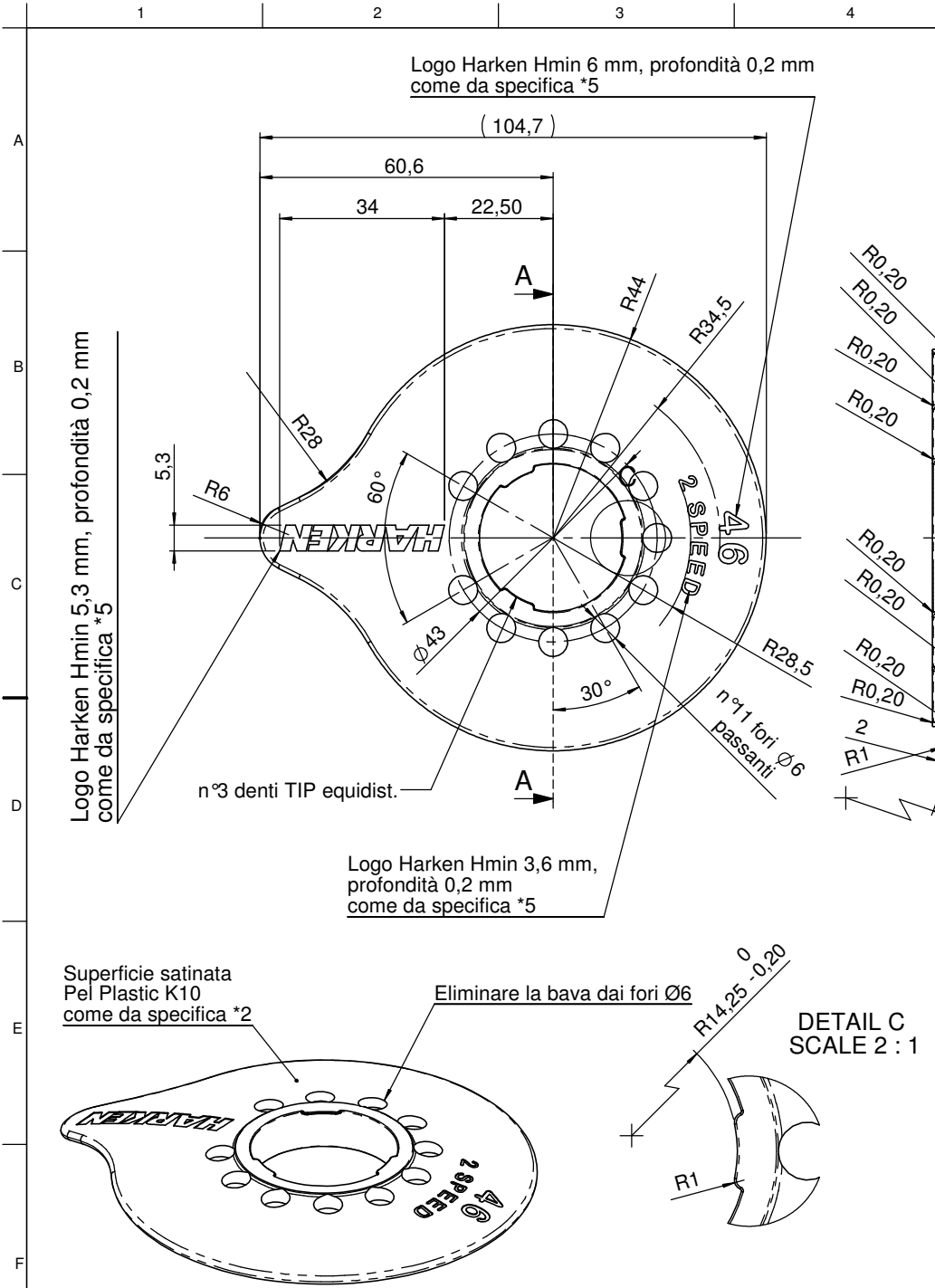
Riferimento a specifiche Harken
 Harken standard dependent



Per l'uso di consumabili fare riferimento alla specifica *1
 Per le coppie di serraggio fare riferimento alla specifica *2

Winch Technical Information		
	1st	2nd
Gear Ratio	2,3	9,17
Power Ratio	11,7	46,5
MWL	1300 kg	
Line Ø (min-max)	8-14 mm	
Line Entry Angle (min-max)	6-10 °	

Nota	Sheet format	Mass [g]	Surface [mm ²]
...	ISO A2		
Material	Finish	Scale	1:1
Description	Modified	Drawn	Checked
Winch 46.2 STGNP Goose Neck Plate	Massimo	Massimo	
Winch 46.2 STGNP Goose Neck Plate	Date	Date	Date
	10/08/2013	10/04/2013	
HARKEN	File name	Code	Rev. Mod.
	865949-sv-02	F 865949 02	2

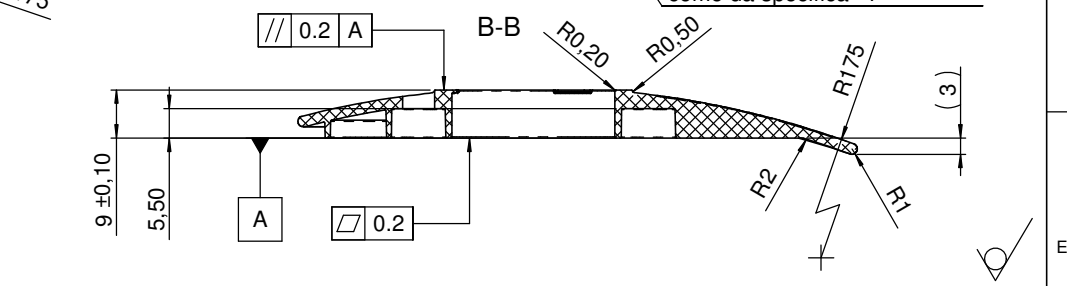
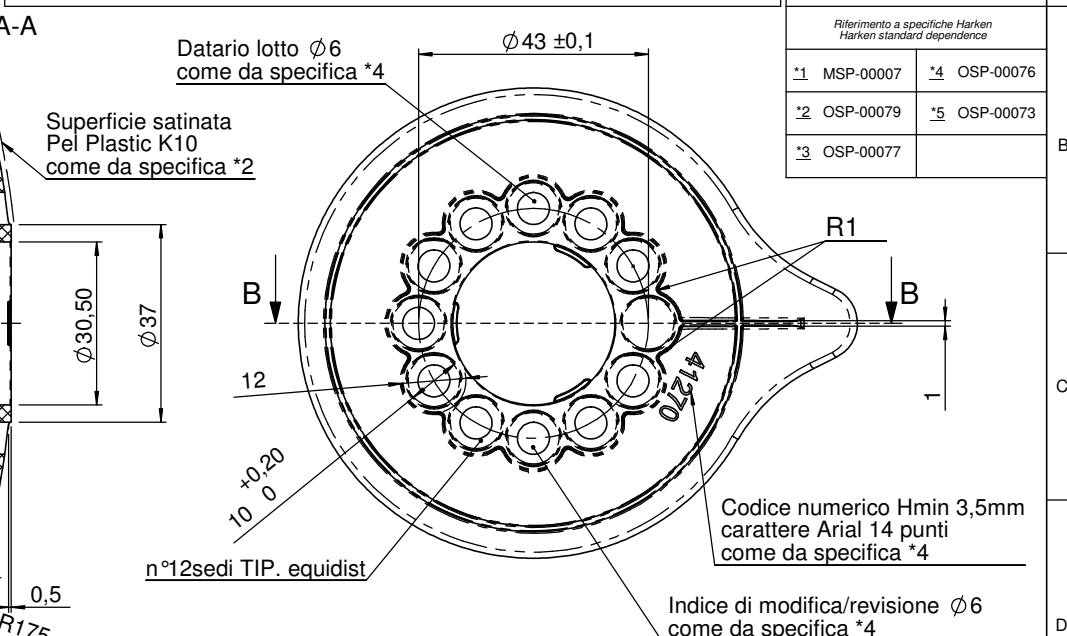


Tolleranze per dimensioni lineari ed angolari prive di indicazione di tolleranza specifiche come da Tab. UNI EN 22768-1 - Classe di tolleranza Media.
Tolerance for linear and angular dimensions without individual tolerance indications as for standard sheet UNI EN 22768-1 - Tolerance class m.

Tolleranze geometriche per elementi privi di indicazione di tolleranza specifiche come da Tab. UNI EN 22768-2 - Classe di tolleranza K.
Geometrical tolerance for features without individual tolerance indications as for standard sheet UNI EN 22768-2 - Tolerance class K.

Revision / Modification:

Tolleranze generali per fori H13 UNI EN 20286. Holes general tolerance H13 UNI EN 20286.	
Tolleranze generali per alberi h13 UNI EN 20286. Shafts general tolerance h13 UNI EN 20286.	
Smussi non quotati 0,2 x 45° All unmarked chamfers 0,2 x 45°	SM
Raggi non quotati 0,5 All unmarked radii 0,5	R
Rompere spigoli vivi Remove all sharp corners	
Tutte le quote si riferiscono prima di eventuali trattamenti superficiali All dimensions refer to the moment previous to surface treatments	
Riferimento a specifiche Harken Harken standard dependence	
*1 MSP-00007	*4 OSP-00076
*2 OSP-00079	*5 OSP-00073
*3 OSP-00077	



La HARKEN SPA è proprietaria esclusiva di questo disegno e di tutte le informazioni in esso contenute. A norma di legge è vietata la riproduzione senza autorizzazione scritta rilasciata dalla HARKEN SPA.
HARKEN SPA is the sole owner of this drawing and of all included information. According to law it is forbidden to reproduce this drawing without a written authorization issued by HARKEN SPA

Note ^{*3} si ricava dalla 41270	Sheet format ISO A3	Mass [g] 16.42	Surface [mm ²] 17302.91
Material ^{*1} PA6+ELASTOMER	Finish ^{*2} Finitura sup. secondo Spec.Harken	Scale 1:1	
Description Coperchio 2 velocità W46 GNP	Modelled Massimo	Drawn Massimo	Checked
Date 23/07/2013	Date 23/07/2013	Date	Date
Code HARKEN® 67657		Code XS 67657 00 A5	
Rev. 0		Mod. A	

CAD 3D Per la definizione della geometria e la determinazione delle dimensioni fare riferimento al modello 3D associato